

Abbott, Detroit The Up-To-The-Minute Car

Abbott-Detroit

AS SHOWN
\$1195



The Greatest *Power Moment* Yet Developed The Utmost of Usable Power

THE term "horsepower," as applied to an automobile, is misleading.

It measures mechanical performance, not it describes appearance.

Two cars of the same rated horsepower are frequently as far apart as the two poles in performance.

The only thing that exactly measures and defines performance is *power moment*.

Power moment takes into consideration not only engine power, but also weight of car and effective gear ratio, including wheel size—the three vital factors that determine a car's performance.

Measured in *power moment*, the

Abbott-Detroit is in a class by itself.

While the car was still "on paper," we figured precisely—in the most minute detail—the exact balance we desired—the *power moment* that would give us the dominant Six, equipped with any other.

We gave the Abbott-Detroit its greatest power at speeds you drive—to give you benefit of its full power when and where you can use it—not at seventy, eighty or ninety miles an hour.

That is why you find the Abbott-Detroit walking away from high-power cars on the hills or in heavy going.

Take this car on the road.

See how easily—how smoothly—how certainly it develops power—actual power—under all conditions that you have for power.

Touch the accelerator. Feel the vitality—the wonderful energy that is instantly available for use.

Ride in this Six at your earliest opportunity. It will surprise and delight you.

Our dealers have demonstrations. We can give immediate deliveries.

Catalogue on request.

Built in Five Body Styles

Four Passenger Touring Car
Five Passenger Touring Sedan

\$1200
\$1200

Four Passenger Motor Coach
Five Passenger Sedan

\$1200
\$1200

Two Passenger Open Top Roadster

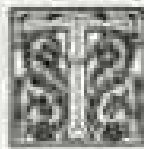
\$1200

All prices F. O. B. Detroit

Consolidated Car Company, Detroit, Mich.



Abbott-Detroit



THE Abbott-Detroit "44" Fore-door Demi-Tonneau is a car which you instinctively feel has the potential energy to do everything well.

Q It is the athlete of the Abbott-Detroit family.

Q It has the reserve strength, the speed, the hill-climbing ability, the elasticity under all conditions that vigorous, out-door people like and appreciate.

Q It is a car that will carry you long distances quickly and safely without a murmur or perceptible effort.

Q Built upon the same chassis as the well-known Abbott-Detroit "44" Touring Car, it has a 4 1/2-inch bore by 5 1/2-inch stroke motor; 36 x 4-inch tires with demountable rims; dry plate clutch; full floating type rear axle, nickel steel construction with Timken

roller bearings; all high duty forgings double heat treated; cellular tube radiator; chrome nickel steel transmission; latest type ventilated fore-door body. Price \$1775.

Q Other models including roadster, touring cars, coupes and limousines \$1275 to \$3000.

Dynamic Equipment for electric lighting, \$10.00 extra.
Harnay Self-starter, including gas tank, \$50.00 extra.

ABBOTT MOTOR COMPANY

637 Waterloo Street

Detroit, Michigan



Abbott-Detroit

44 HP SIX
Four Passenger Roadster
\$1250



A Trim, Racy Roadster With Plenty of Room for Four



The unique seating arrangement of the four-passenger roadster provided accommodations for four, all facing forward. There is ample leg room—plenty of room to stretch out and relax.

Here is a roadster—trim, snappy, racy—that easily accommodates four.

And all face forward—sitting in deep, thickly upholstered seats.

It's a companionable, chummy arrangement, and one that's most convenient.

A wide aisleway between the front seats gives easy access to the roomy rear compartment, where two adults can ride in perfect comfort.

There's nothing cramped about the rear seat—even on an extended tour.

It has ample leg room—plenty of room to stretch out and relax.

All seats are placed forward of the rear axle, giving the fullest and most complete riding ease.

The four-passenger roadster has the same long wheelbase—the same great motor—the same identical chassis as the famous Abbott-Detroit Six seven-passenger touring car.

But the body is lighter and gets more away from the conventional.

It is different, yet exceedingly practical—built to meet a demand, not a fad.

This new car has a striking symmetry of lines. It has finish, speed, power and endurance.

In addition, it possesses that keen balance of weight, power, gear ratio and wheel size which gives the Abbott-Detroit Six greater power moment than any other car now built.

Such a body on such a chassis is supreme as a practical sporting type of car.

Dealers find it one of the easiest, quickest sellers of the highly popular Abbott-Detroit line.

Look over the list of models printed below. The Abbott-Detroit furnishes what is unquestionably the biggest and best dealer opportunity now available.

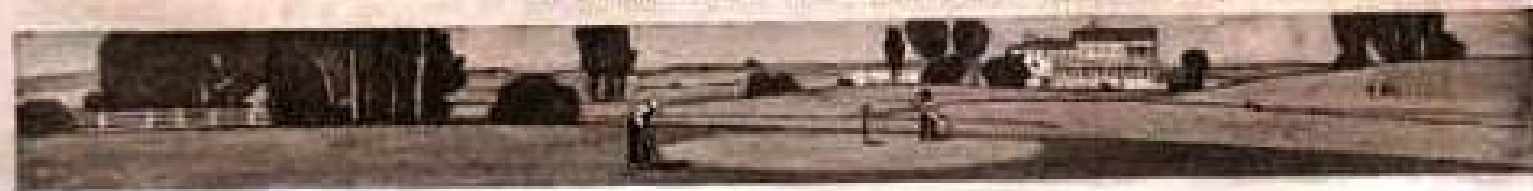
We have room for good, substantial dealers. Write today.

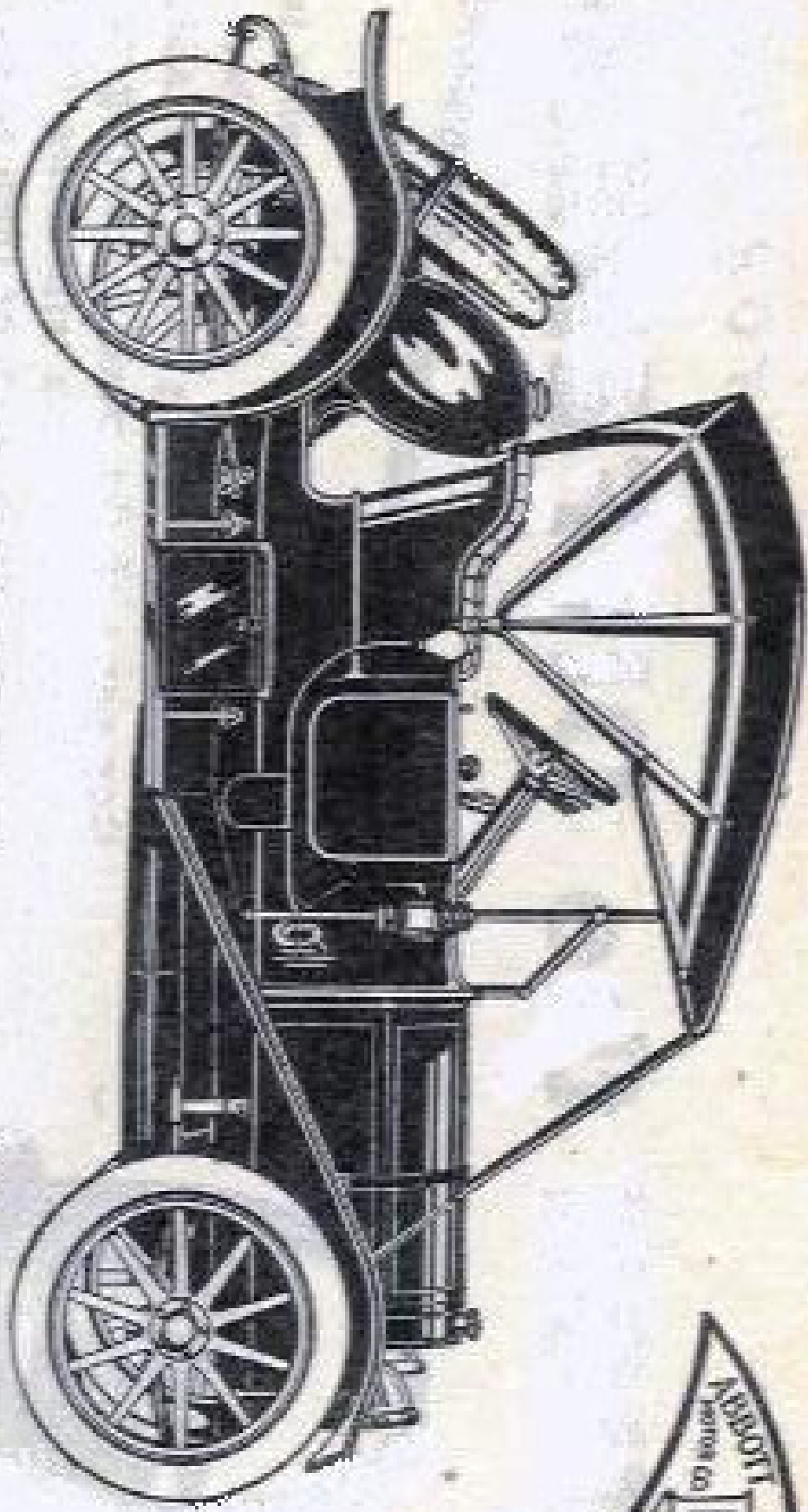
One Chassis—Five Body Styles

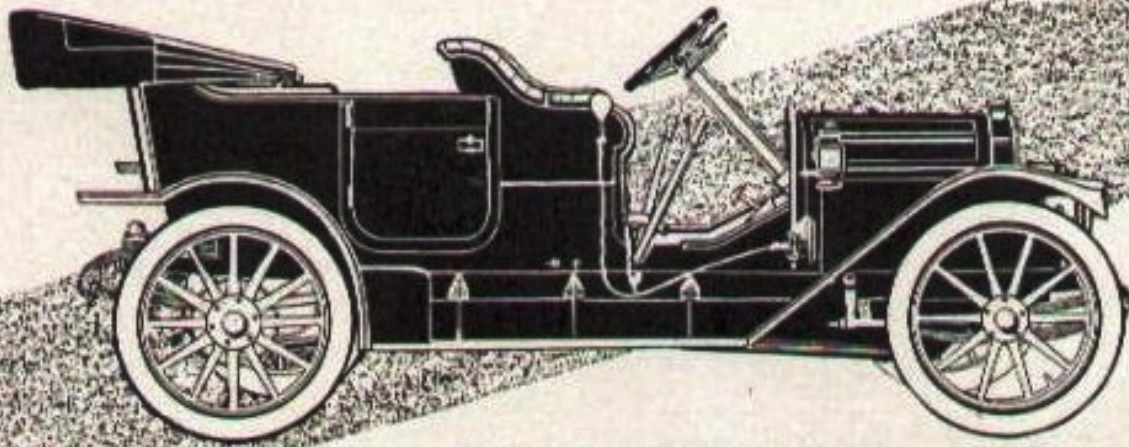
Four-Passenger Touring Car.....	\$1250	Four-Passenger Motor Coach.....	\$1400
Five-Passenger Touring Sedan.....	\$1300	Five-Passenger Touring Sedan.....	\$1300
Four-Passenger Six-Passenger Roadster.....	\$1250		

ALL PRICES F. O. B. DETROIT

Consolidated Car Company, Detroit, Mich.







Five-Passenger Touring Car

THE Abbott-Detroit is the one car selling at \$1500 that has reached a perfect stage of standardization. By this we mean to say that, taking all that has been accomplished in motordom since the first automobile stood up, the Abbott-Detroit embodies, in every detail, the best that has been done. It is a composite revelation of perfections. Such mechanical excellence, such faithfulness to reproduce all the Blue Ribbon ideas, cannot be found in any other car at this price.

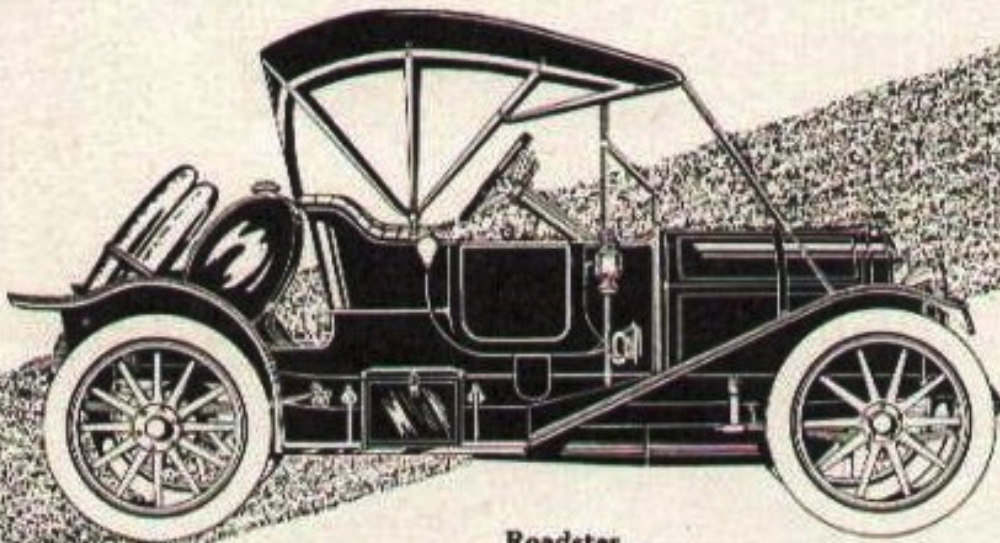
- Model B, Five-Passenger Touring Car, Standard Equipment, \$1500 F. O. B. Detroit.
- Fore-Door, Five-Passenger Touring Car, Standard Equipment, \$1550 F. O. B. Detroit.
- Roadster, Standard Equipment, \$1500 F. O. B. Detroit.
- Fore-Door, Demi-Tonneau (tonneau d tachable), Standard Equipment, \$1650 F. O. B. Detroit.
- Coupe, Standard Equipment, \$2350 F. O. B. Detroit.



Many features of the Abbott-Detroit are achievements of magnitude in themselves. Many of the fine points represent the best work of lifetimes, which were specialized on these details. The Abbott-Detroit looks like a \$4000 car, runs like a \$4000 car, endures like a \$4000 car, can be bought for \$1500. The Abbott-Detroit has an enviable record. The significance of its victories in national and international speed and endurance contests easily distinguishes it as far above the cars supposed to be in its class solely because of price classification.

Our Illustrated Catalog—The Book of Abbott-Detroit—upon request.

Abbott Motor Co.
120 Waterloo Street, Detroit, Michigan.



Roadster

